

Specialist Contractors

SINCE 1985



Our Sectors



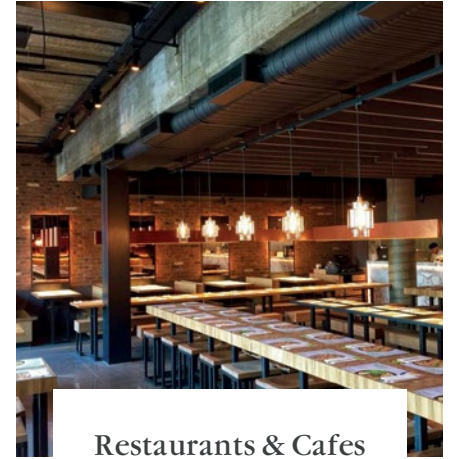
Designer Brands



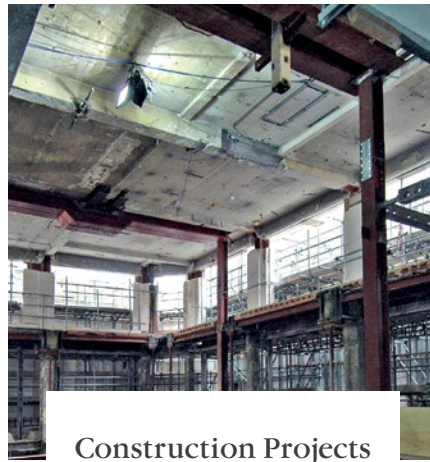
Fashion Retail



Specialist Retail



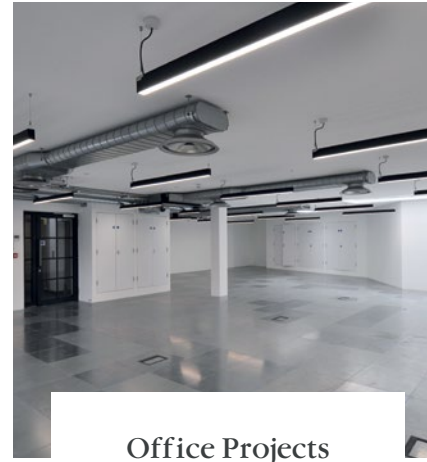
Restaurants & Cafes



Construction Projects



Hotels & Spas



Office Projects

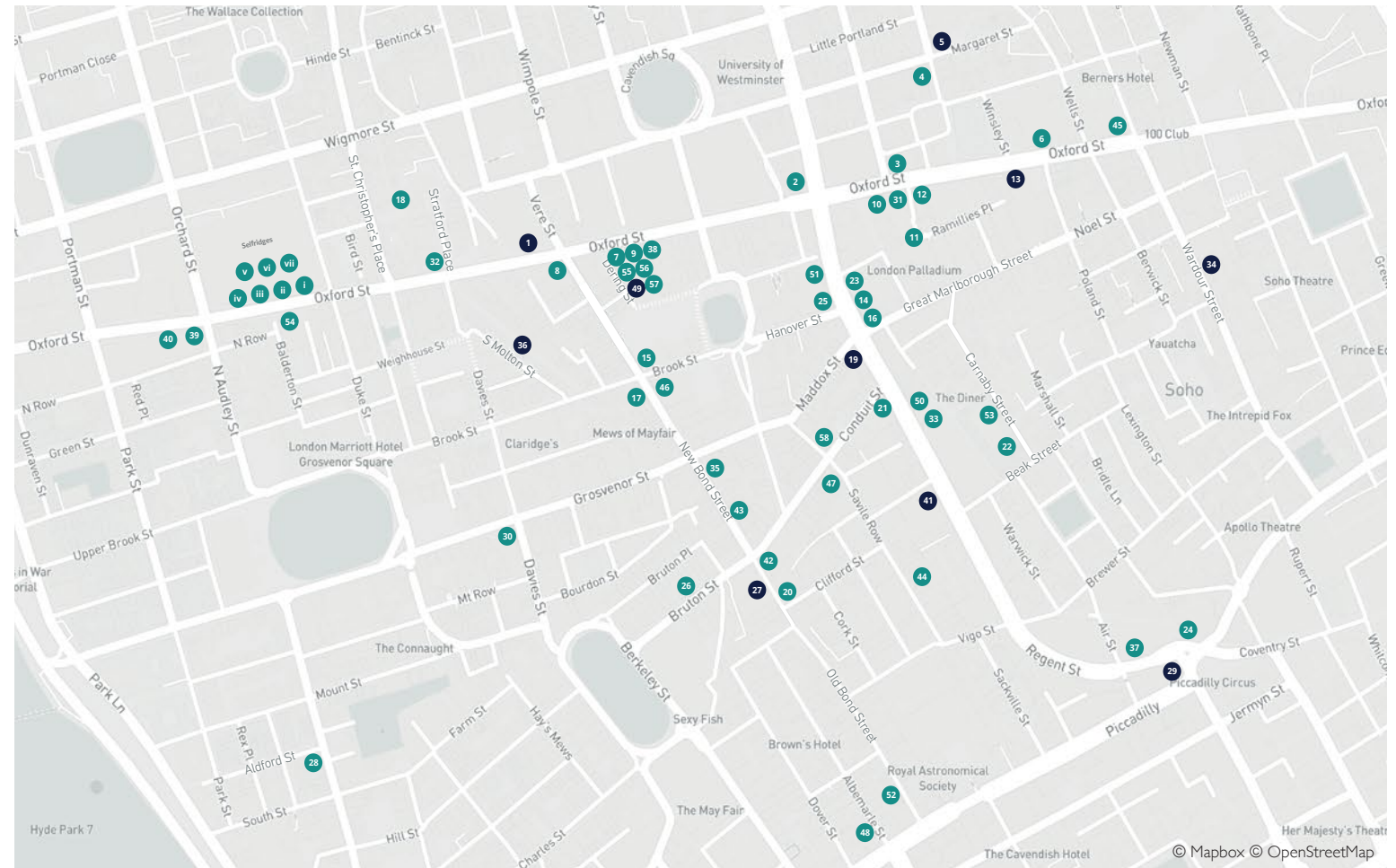


Residential Projects

Central London

Our Project Map

1. Mexx, Oxford Street
2. H&M Oxford Circus
3. Urban Outfitters Oxford St.
4. Reiss Market Place
5. L.S.C. Margaret Street
6. H&M Oxford Street East
7. Massimo Dutti Oxford St.
8. Zara Oxford Street West
9. Pull and Bear Oxford Street
10. Gap Oxford Street
11. Puzzle Investments Hills Pl.
12. Zara Oxford Street West
13. Bik Bok Oxford Street
14. H&M Regent Street
15. Calvin Klein New Bond St.
16. Banana Republic Regent St.
17. Hush Lancaster Court
18. Auberge St. Christopher's Pl.
19. Blunaut Regent Street
20. Louis Vuitton New Bond St.
21. Molton Brown Regent St.
22. Puma Carnaby Street
23. H&M (offices) Regent Street
24. Gap Piccadilly Circus
25. Longchamp Regent Street



26. Isabel Marant, Bruton Street
27. Dior New Bond Street
28. John Frieda Aldford Street
29. The Sting Piccadilly Circus
30. Cipriani Davies Street
31. Bershka Oxford Street
32. Forever 21 Oxford Street
33. Hamley's Offices Regent St.
34. Cafe Brera Wardour Street
35. Smythson New Bond Street
36. Molton Brown S Molton Street

37. Nespresso Regent Street
38. AAA United (Swatch) Oxford St.
39. Zara Park House Oxford St.
40. Bershka Parkhouse Oxford St.
41. Burberry Regent Street
42. Burberry New Bond Street
43. Longchamp New Bond St.
44. Scabal Savile Row
45. Accessorize Oxford Street
46. Fenwick New Bond Street
47. Dsquared2 Conduit Street

48. Alexander Wang Albemarle St.
49. Jerome Zodo Gallery Dering St.
50. COS Regent Street
51. Apple Regent Street
52. Cartier New Bond Street
53. Size Carnaby Street
54. Adidas Oxford Street
55. Office Development Dering St.
56. Private Apartment Oxford St
57. Toast Dering Street
58. Bape Conduit Street

- SELFRIDGES Oxford Street
- i) Dior ii) Balenciaga
- iii) Prada iv) Nespresso
- v) Ralph Lauren vi) Moncler
- vii) COS

- Currently Trading Stores
- Stores That Have Subsequently Closed Down



Adidas

Oxford Street

German based sportswear company Adidas are the biggest sportswear designers and manufacturers in Europe and second biggest in the world, only to Nike. In early 2019 we were awarded the contract to fit out their new flagship store in Oxford Street. This was a huge project with a floor area of over 4,700m² (50,600sq.ft) over 5 floors and a contract period of only 18 weeks. Our dedicated site workers and management teams, managed to maximise the time available within the restrictions imposed by Westminster Council and the project was consequently completed two days early, much to the appreciation of the client.



H&M

Oxford Circus

H&M's flagship store in London's Oxford Circus provided a challenging project for the Powells team to convert all eight floors of this Grade II listed building for use. Previously only trading across four floors the remit was to produce a fit out with six trading floors and two floors dedicated to back room staff areas and offices. This included major structural work, new openings for staircases and escalators as well as major shopfitting works, adaptations and extensions to all the main services throughout. The result was a very large and remarkable store befitting of its iconic location and proved a launchpad for multiple other projects with this longstanding client of ours.





Cartier

New Bond Street

This prestigious project over five floors across New Bond Street and Albemarle Street, Mayfair required the utmost attention to detail. Major structural and re-roofing work had to be undertaken to get the building prepared for the stunning internal fit-out. A luxurious array of bespoke fixtures and marble clad Italian cabinetry were installed to create an extraordinarily high quality finish. Further work included the restoration of ornate fibrous cornices and plaques, the installation of octagonal patterned parquet flooring and fan segmented stone flooring punctuated with patinated brass bars. Original fireplaces, intricate hardwood, wall panelling and the lift system all had to be carefully restored, whilst new chandeliers and Turkish carpets had to be installed. The result was Cartier's magnificent new 'Temple', described in the luxury press as a 'church of craftsmanship'.



Nespresso

Regent Street

Nespresso, the high-quality coffee specialist, are owned by Swiss company Nestle Group. They currently have over 30 'boutiques' in the UK, including concessions within department stores such as John Lewis and Selfridges. We have fitted out stores throughout the UK including Edinburgh, Manchester and their flagship store in Regent Street, London.





Forever 21

Oxford Street

Forever 21, originally known as Fashion 21, was founded by Korean American Do Won Chang in 1984. They now have over 480 stores worldwide, many of them 'Department Store' sized. We have fitted out six of the eight stores in the British Isles including Dublin, Glasgow and Oxford Street London.



Zara

Parkhouse Oxford Street

Zara are the leading brand name of Spanish fashion giants the Inditex Group, and were formed in 1975. They are now Europe's largest fashion retail group and we have been the main contractors for over half of their UK stores, carrying out over 70 major projects. We have also completed over 40 stores for their subsidiary brands, Pull and Bear, Bershka, Massimo Dutti, Zara Home and Stradivarius.

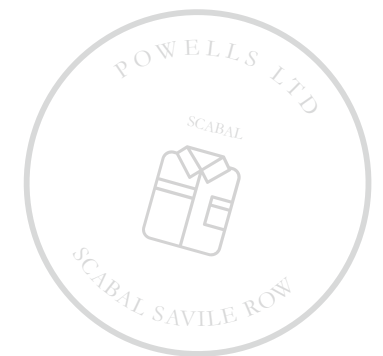




Scabal

Savile Row

Scabal are a high class tailoring company from Belgium, who have been established in London's famous Savile Row since the 1960s when they acquired an old Mercedes car showroom. The high-class tailoring company makes and wholesales its own fabrics to other tailors as well as making bespoke garments. We were awarded the contract to create a fantastic new showroom, one of eight in Europe.



Jerome Zodo

Art Gallery

Mayfair

The fit out of Jerome Zodo Gallery on the ground, first and second floors on Dering Street London included structural work, services and new floor and wall finishes, all to provide a minimalist backdrop for the exhibits. This was not our first London art gallery as we also fitted out the 'Thomas Gibson Fine Art' gallery in Piccadilly.





Dsquared2 Mayfair Store

This striking new store, located in Conduit Street, London, was completed to exacting standards. The store is sleek and shiny with dark woods, natural stone and tonal mirrors boasting three floors of retail space. After the store fit-out we converted the empty second floor space to office accommodation.



Longchamp

Regent Street

French luxury leather goods retailer Longchamp have over 1,800 stores in over 100 countries. The first project awarded to us was their Regent Street flagship store which featured a stunning circular glass, natural stone and hardwood staircase with leather wrapped handrails. This was quickly followed by their Mayfair store which started the week after the handover of Regent Street.





Louis Vuitton

New Bond Street

One of the most prestigious projects undertaken in recent years was the total rebuild and fit-out of the Louis Vuitton 'Maison' in New Bond Street, Mayfair, London. Most of the main structure was removed leaving only the front facade, and then the building was then strengthened with many tonnes of structural steel. After a year of structural work the fit-out began which included an LED illuminated glass staircase with programmable screens in every step – just one of the many features in this iconic building.



Not only do we work in Central London but also Chelsea, Kensington, Covent Garden & Knightsbridge and many other London Boroughs.



We work in department stores such as Selfridges, Harrods and Fenwick.



We are the leading contractor for Westfield in Stratford and White City London with over 50 stores completed.

